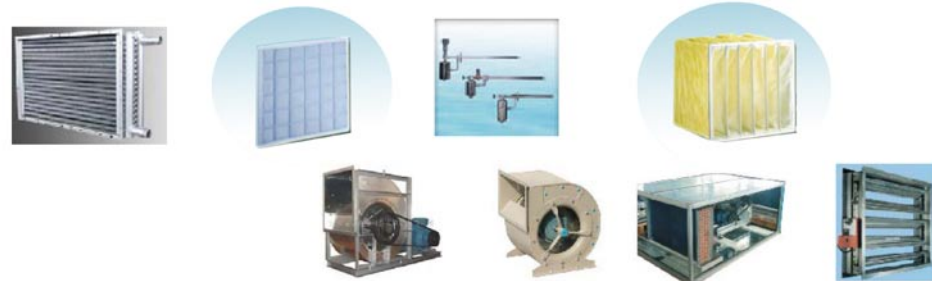


Modular Air Handling Unit

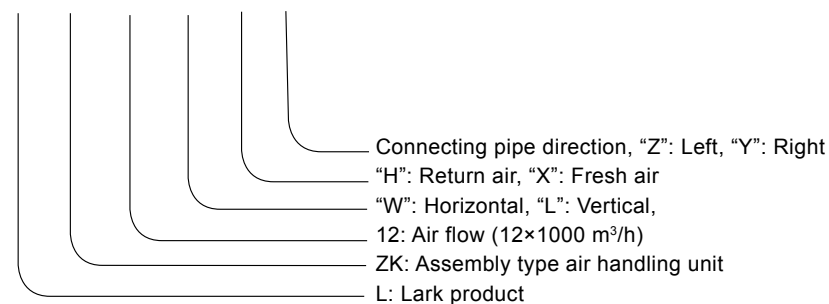


Features

- LARK's Modular air handling units give you the flexibility to meet the requirements of your application, including horizontal and vertical units.
- Wide application as hotel, apartment, factory, shopping center, office building, school, etc.
- Modular design, assemble flexible, installation convenient.
- Compact, lightweight design conserves space.
- Smooth operation, low noise, and high total pressure.
- Multiple coil design.
- Multiple arrangements including top discharge and side discharge.
- Good sealing, low leakage rate, high heat transfer efficiency.
- Nice appearance, corrosion resistance, convenient maintenance.

Instruction of model

L ZK 12 W H Z



Additional

Please declare the direction of inlet/outlet air.

Model of air handling unit

50Hz 60Hz

Model	Air flow	Total pressure	Motor power	Total pressure	Motor power	Total pressure	Motor power
	m³/h	Pa	kW	Pa	kW	Pa	kW
LZK2	2000	800	0.75	1200	1.5	1600	2.2
LZK4	4000	800	1.5	1200	2.2	1600	3
LZK6	6000	800	2.2	1200	3	1600	4
LZK8	8000	800	3	1200	4	1600	5.5
LZK10	10000	800	4	1200	5.5	1600	7.5
LZK12	12000	800	5.5	1200	7.5	1600	7.5
LZK15	15000	800	5.5	1200	7.5	1600	11
LZK18	18000	800	7.5	1200	11	1600	11
LZK20	20000	800	7.5	1200	11	1600	15
LZK25	25000	800	11	1200	15	1600	15
LZK30	30000	800	11	1200	15	1600	18.5
LZK35	35000	800	15	1200	18.5	1600	22
LZK40	40000	800	15	1200	22	1600	30
LZK50	50000	800	18.5	1200	30	1600	30
LZK60	60000	800	22	1200	30	1600	37
LZK70	70000	800	30	1200	37	1600	45
LZK80	80000	800	30	1200	37	1600	55
LZK90	90000	800	37	1200	45	1600	55
LZK100	100000	800	45	1200	55	1600	75

Return air & cooling condition

50Hz 60Hz

Model	Air flow	4R				6R				8R			
		TC	SC	Water flow	Water resistance	TC	SC	Water flow	Water resistance	TC	SC	Water flow	Water resistance
		kW	kW	m³/h	kPa	kW	kW	m³/h	kPa	kW	kW	m³/h	kPa
LZK2	2000	11.0	8.8	1.9	3.9	15.1	12.0	2.6	8.4	17.5	14.0	3.1	21.8
LZK4	4000	21.4	17.1	3.7	16.2	29.5	23.6	5.1	34.4	34.6	27.6	6.0	40.2
LZK6	6000	33.6	26.0	7.2	28.7	46.7	37.4	8.1	38.6	54.1	43.3	9.4	13.6
LZK8	8000	42.2	32.3	8.2	47.6	61.8	49.4	10.7	42.3	71.6	57.3	12.4	30.2
LZK10	10000	58.9	47.2	10.2	10.60	78.5	62.8	13.6	21.40	90.4	72.3	15.6	14.2
LZK12	12000	71.0	55.4	12.1	14.60	92.9	74.7	16.3	21.70	109.4	87.5	18.9	18.4
LZK15	15000	84.9	69.9	15.0	13.46	104.3	83.4	18.0	18.36	121.8	97.4	21.0	30.3
LZK18	18000	106.4	83.1	18.9	22.20	137.9	108.3	24.5	43.50	167.7	134.1	28.9	36
LZK20	20000	118.4	92.7	21.2	24.50	155.9	122.7	27.2	39.20	187.4	150.0	32.3	32.3
LZK25	25000	145.2	112.1	27.1	39.30	189.4	149.5	32.9	28.70	220.7	176.5	38.1	39.2
LZK30	30000	200.7	160.6	34.6	30.20	241.8	193.5	41.7	26.60	266.9	213.5	46.0	28.9
LZK35	35000	237.7	190.2	41.0	40.50	285.1	228.1	49.2	36.50	317.1	253.6	54.7	68.9
LZK40	40000	271.8	217.4	46.9	45.50	327.5	262.0	56.5	41.90	361.1	288.8	62.2	91.4
LZK50	50000	330.4	264.3	57.0	39.30	398.7	319.0	68.7	28.70	441.3	353.1	76.1	25.2
LZK60	60000	401.4	321.1	69.2	30.20	483.6	386.9	83.4	26.60	533.9	427.1	92.0	67
LZK70	70000	475.5	380.4	81.9	40.50	570.2	456.1	98.3	36.50	634.1	507.3	109.3	80.7
LZK80	80000	493.0	394.4	85.0	45.50	655.0	524.0	112.9	41.90	722.1	577.7	124.4	108
LZK90	90000	539.8	431.9	93.0	54.75	695.7	556.6	119.9	86.83	792.7	634.1	136.6	121
LZK100	100000	660.7	528.6	113.9	76.84	797.4	637.9	137.4	88.53	882.7	706.1	152.1	125

Note: the parameters above following:

Air inlet temperature DB 27°C/WB 19.5°C ,water inlet temperature 7°C,water temperature difference 5°C.

Modular Air Handling Unit

Fresh air & cooling condition

50Hz 60Hz

Model	Air flow m³/h	4R				6R				8R			
		TC	SC	Water flow	Water resistance	TC	SC	Water flow	Water resistance	TC	SC	Water flow	Water resistance
		kW	kW	m³/h	kPa	kW	kW	m³/h	kPa	kW	kW	m³/h	kPa
LZK2	2000	27.0	21.6	4.7	28.4	34.6	27.6	6.0	40.81	38.8	31.0	6.7	8.9
LZK4	4000	53.1	42.4	9.2	11.3	68.7	54.9	11.9	34.91	77.4	61.9	13.4	30.2
LZK6	6000	83.0	66.4	14.3	12.3	106.2	85.0	18.3	37.84	118.5	94.8	20.5	33.8
LZK8	8000	110.6	88.4	19.1	23.9	140.1	112.1	24.2	57.81	156.5	125.2	27.0	50.4
LZK10	10000	141.5	113.2	24.4	35.2	177.1	141.6	30.5	53.70	196.9	157.5	34.0	55.2
LZK12	12000	160.4	126.3	28.0	34.90	194.5	153.6	33.8	30.30	224.4	179.5	38.7	56.3
LZK15	15000	199.9	159.9	34.5	31.99	249.8	199.8	43.1	60.40	263.3	210.7	45.4	66.2
LZK18	18000	240.8	192.6	41.5	23.70	316.5	253.2	54.6	80.00	345.7	276.5	59.6	86.7
LZK20	20000	261.4	209.1	45.1	30.90	370.0	296.0	63.8	75.60	410.4	328.3	70.7	108.2
LZK25	25000	338.0	270.4	58.3	66.98	446.0	356.8	76.9	65.00	485.8	388.6	83.7	155.4
LZK30	30000	411.9	329.6	71.0	28.60	543.6	434.9	93.7	90.70	586.0	468.8	101.0	167.2
LZK35	35000	488.4	390.7	84.2	35.30	634.1	507.3	109.3	112.60	689.3	551.4	118.8	187.2
LZK40	40000	556.7	445.4	95.9	72.90	723.3	578.7	124.6	121.80	788.7	631.0	135.9	195.4
LZK50	50000	675.9	540.7	116.5	71.13	892.1	713.7	153.7	65.00	971.5	777.2	167.4	118.2
LZK60	60000	823.9	659.1	142.0	28.60	1087.3	869.8	187.3	90.70	1172.0	937.6	201.9	162.3
LZK70	70000	976.8	781.4	168.3	35.30	1268.2	1014.6	218.5	125.00	1378.6	1102.9	237.5	176.5
LZK80	80000	1113.5	890.8	191.8	72.90	1446.6	1157.3	249.2	121.80	1577.5	1262.0	271.8	192.1
LZK90	90000	1199.5	959.6	206.7	72.90	1501.0	1200.8	258.6	130.44	1747.0	1397.6	301.0	172.5
LZK100	100000	1338.9	1071.1	229.6	71.73	1665.6	1332.5	287.0	148.80	1943.0	1554.4	334.7	188.2

Note: the parameters above following:

Air inlet temperature DB 34°C/WB 28°C ,water inlet temperature 7°C,water temperature difference 5°C.

Return air & heating condition

50Hz 60Hz

Model	Air flow m³/h	Hot water									Steam			
		1R			2R			4R			1R		2R	
		TC	Water flow	Water resistance	TC	Water flow	Water resistance	TC	Water flow	Water resistance	TC	Steam flow	TC	Steam flow
kW	m³/h	kPa	kW	m³/h	kPa	kW	m³/h	kPa	kW	kg/h	kW	kg/h		
LZK2	2000	10.1	0.9	2.3	12.7	1.1	1.0	16.5	1.9	3.91	9.4	12.2	18.9	24.5
LZK4	4000	13.7	1.2	6.7	24.2	2.1	4.3	32.0	3.7	16.16	17.8	23.1	35.6	46.1
LZK6	6000	20.3	1.8	8.8	43.3	3.8	12.3	50.4	7.2	28.72	28.4	36.8	56.8	73.6
LZK8	8000	27.1	2.4	13.9	57.9	5.0	18.9	63.3	8.2	47.62	41.5	53.7	83.1	107.6
LZK10	10000	34.0	3.0	1.2	65.1	5.7	3.2	88.4	10.2	10.60	54.5	70.6	109.0	141.2
LZK12	12000	40.6	3.5	1.7	79.8	6.9	4.5	106.5	12.1	14.60	70.1	90.8	140.3	181.7
LZK15	15000	50.8	4.4	2.5	92.7	8.0	4.5	127.4	15.0	13.46	77.7	100.6	155.5	201.4
LZK18	18000	60.8	5.3	3.0	122.1	10.6	6.3	159.6	18.9	22.20	87.7	113.6	175.5	227.3
LZK20	20000	67.7	5.9	4.1	137.5	11.9	8.0	177.5	21.2	24.50	106.1	137.4	212.3	274.9
LZK25	25000	84.5	7.3	5.8	176.7	15.3	7.7	217.8	27.1	39.30	112.6	145.8	225.3	291.8
LZK30	30000	101.4	8.8	5.2	211.7	18.3	6.7	301.1	34.6	30.20	143.2	185.4	286.4	370.9
LZK35	35000	118.5	10.3	6.5	250.9	21.7	9.2	356.6	41.0	40.50	168.3	217.9	336.6	435.9
LZK40	40000	135.4	11.7	8.4	287.2	24.8	11.7	407.7	46.9	45.50	206.9	267.9	414.8	537.2
LZK50	50000	169.1	14.6	7.0	353.4	30.5	12.2	495.5	57.0	39.30	225.2	291.6	450.6	583.5
LZK60	60000	202.8	17.5	7.3	423.4	36.5	6.7	602.1	69.2	30.20	286.4	370.9	572.8	741.8
LZK70	70000	237.0	20.5	8.7	501.7	43.3	9.2	713.2	81.9	40.50	336.8	436.1	673.2	871.8
LZK80	80000	270.7	23.4	11.5	574.5	49.5	11.7	739.5	85.0	45.50	413.8	535.9	829.6	1074.3
LZK90	90000	304.4	26.3	13.2	632.0	54.5	14.3	809.8	93.0	54.75	429.5	556.2	859.2	1112.6
LZK100	100000	338.1	29.2	10.1	706.7	60.9	12.2	991.1	113.9	76.84	450.4	583.3	901.2	1167.0

Note: the parameters above following:

• Air inlet temperature 20°C ,water inlet/outlet temperature 60°C/50°C;

• Air inlet temperature 20°C ,steam inlet temperature 110°C,steam pressure 0.2MPa.

Fresh air & heating condition

50Hz 60Hz

Model	Air flow m³/h	Hot water									Steam			
		1R			2R			4R			1R		2R	
		TC	Water flow	Water resistance	TC	Water flow	Water resistance	TC	Water flow	Water resistance	TC	Steam flow	TC	Steam flow
		kW	m³/h	kPa	kW	m³/h	kPa	kW	m³/h	kPa	kW	kg/h	kW	kg/h
LZK2	2000	10.8	1.0	4.8	17.7	1.6	3.2	40.5	4.7	28.4	11.4	14.8	22.7	29.4
LZK4	4000	21.9	1.9	11.5	35.5	3.1	9.0	79.6	9.2	11.3	21.4	27.7	42.8	12.9
LZK6	6000	32.7	2.9	18.4	52.9	4.6	16.1	124.5	14.3	12.3	34.1	44.2	68.3	20.6
LZK8	8000	43.5	3.8	24.2	70.6	6.1	22.9	165.8	19.1	23.9	49.9	64.6	99.9	30.1
LZK10	10000	54.2	4.7	1.2	88.4	7.6	5.8	212.3	24.4	35.2	65.5	84.8	131.1	39.5
LZK12	12000	65.1	5.7	1.7	105.8	9.1	4.8	240.6	28.0	34.9	84.3	109.2	168.7	50.9
LZK15	15000	81.1	7.0	2.5	132.3	11.4	7.2	299.8	34.5	31.99	93.4	121.0	186.9	56.4
LZK18	18000	97.4	8.4	3.0	158.8	13.7	5.6	361.2	41.5	23.70	105.5	136.6	211.0	63.6
LZK20	20000	108.2	9.4	4.1	176.8	15.2	6.9	392.0	45.1	30.90	127.6	165.2	255.3	77.0
LZK25	25000	135.4	11.7	5.8	220.7	19.0	9.7	506.9	58.3	66.98	135.4	175.3	270.9	81.7
LZK30	30000	162.2	14.0	5.2	264.9	22.8	13.6	617.9	71.0	28.60	172.2	223.0	344.4	103.8
LZK35	35000	189.3	16.4	6.5	309.1	26.5	17.4	732.6	84.2	35.30	202.3	262.0	404.7	122.0
LZK40	40000	216.5	18.7	8.4	353.2	30.3	12.4	835.1	95.9	72.90	248.8	322.2	497.7	150.1
LZK50	50000	270.7	23.4	7.0	441.4	37.9	11.7	1013.9	116.5	71.13	270.8	350.7	541.8	163.4
LZK60	60000	324.4	28.0	7.3	529.7	45.5	17.0	1235.8	142.0	28.60	344.4	446.0	688.8	207.7
LZK70	70000	378.7	32.7	8.7	618.1	53.0	21.0	1465.2	168.3	35.30	404.6	523.9	809.4	244.1
LZK80	80000	432.9	37.3	11.5	706.5	60.6	17.3	1670.2	191.8	72.90	497.6	644.4	995.4	300.1
LZK90	90000	486.7	42.0	13.2	794.9	68.2	19.7	1799.3	206.7	72.90	515.4	667.4	1033.0	311.5
LZK100	100000	538.8	46.5	10.1	883.2	75.8	22.0	2008.3	229.6	71.73	541.6	701.4	1083.6	326.7

Note: the parameters above following:

• Air inlet temperature 5°C ,water inlet/outlet temperature 60°C/50°C;

• Air inlet temperature 5°C ,steam inlet temperature 110°C,steam pressure 0.2MPa.

Modular Air Handling Unit

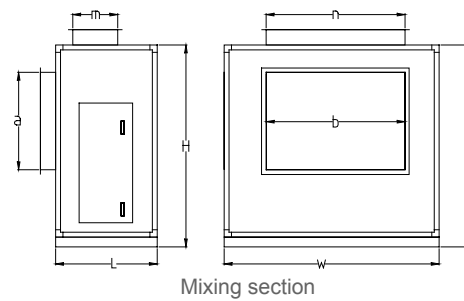
Dimensions of Each Function Sections

Mixing section

Model	LZK2	LZK4	LZK6	LZK8	LZK10	LZK12	LZK15	LZK18	LZK20	LZK25	LZK30	LZK35	LZK40	LZK50	LZK60	LZK70	LZK80	LZK90	LZK100
Air flow (m³/h)	2000	4000	6000	8000	10000	12500	15000	18000	20000	25000	30000	35000	40000	50000	60000	70000	80000	90000	100000
W(mm)	780	1150	1150	1400	1400	1500	1750	1750	2050	2050	2350	2350	2750	2750	3350	3350	3700	3700	3700
H(mm)	780	860	1150	1150	1400	1500	1500	1750	1750	2050	2050	2350	2350	2750	2750	3050	3050	3350	3700
L(mm)	500	500	500	500	600	600	600	600	800	800	800	800	800	1000	1000	1000	1000	1000	1000
a(mm)	300	300	400	400	450	450	500	500	600	600	650	650	700	800	800	850	850	900	900
b(mm)	400	500	600	800	1000	1100	1200	1300	1400	1550	1750	1950	2100	2200	2400	2600	2800	3000	3200
m(mm)	150	150	200	200	300	300	300	300	400	400	400	400	400	500	500	500	550	550	550
n(mm)	300	300	400	400	400	400	600	600	600	600	700	700	850	900	1100	1200	1300	1400	1500
Net(kg)	41	60	67	78	102	109	112	121	166	179	190	210	230	310	350	375	420	453	470

Note:

- Tuyere is compose of flange,also can deploy manual or electromotion (switch/adjust type) aluminum alloy commuting leafy regulator.
- Tuyere size can be made according to the request of customer.
- The direction of return air should be better horizontal.



Primary filtering section

Model	LZK2	LZK4	LZK6	LZK8	LZK10	LZK12	LZK15	LZK18	LZK20	LZK25	LZK30	LZK35	LZK40	LZK50	LZK60	LZK70	LZK80	LZK90	LZK100
Air flow (m³/h)	2000	4000	6000	8000	10000	12000	15000	18000	20000	25000	30000	35000	40000	50000	60000	70000	80000	90000	100000
W(mm)	780	1150	1150	1400	1400	1500	1750	1750	2050	2050	2350	2350	2750	2750	3350	3350	3700	3700	3700
H(mm)	780	860	1150	1150	1400	1500	1500	1750	1750	2050	2050	2350	2350	2750	2750	3050	3050	3350	3700
L(mm)	200	200	200	200	200	200	200	200	200	200	200	200	200	200	200	200	200	200	200
Net(kg)	30	43	47	54	60	66	75	83	96	110	118	128	145	176	221	230	260	289	305

Middle-efficient filtering section

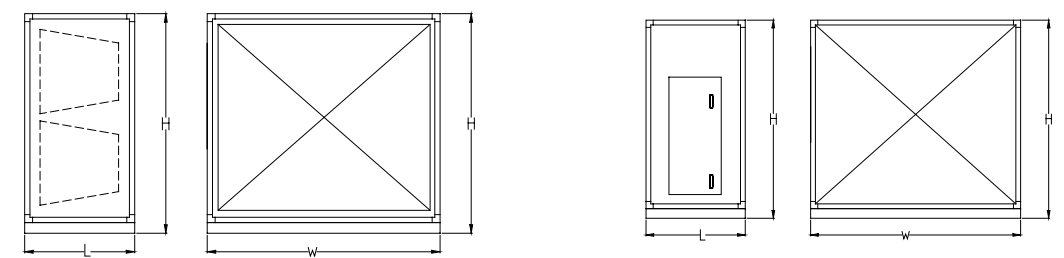
Model	LZK2	LZK4	LZK6	LZK8	LZK10	LZK12	LZK15	LZK18	LZK20	LZK25	LZK30	LZK35	LZK40	LZK50	LZK60	LZK70	LZK80	LZK90	LZK100
Air flow (m³/h)	2000	4000	6000	8000	10000	12000	15000	18000	20000	25000	30000	35000	40000	50000	60000	70000	80000	90000	100000
W(mm)	780	1150	1150	1400	1400	1500	1750	1750	2050	2050	2350	2350	2750	2750	3350	3350	3700	3700	3700
H(mm)	780	860	1150	1150	1400	1500	1500	1750	1750	2050	2050	2350	2350	2750	2750	3050	3050	3350	3700
L(mm)	600	600	600	600	600	600	600	600	600	600	600	600	600	600	600	600	600	600	600
Net(kg)	51	67	75	84	93	99	112	120	140	151	172	186	202	240	278	301	338	376	398

Sub-high & High-efficient filtering section

Model	LZK2	LZK4	LZK6	LZK8	LZK10	LZK12	LZK15	LZK18	LZK20	LZK25	LZK30	LZK35	LZK40	LZK50	LZK60	LZK70	LZK80	LZK90	LZK100
Air flow (m³/h)	2000	4000	6000	8000	10000	12000	15000	18000	20000	25000	30000	35000	40000	50000	60000	70000	80000	90000	100000
W(mm)	780	1150	1150	1400	1400	1500	1750	1750	2050	2050	2350	2350	2750	2750	3350	3350	3700	3700	3700
H(mm)	780	860	1150	1150	1400	1500	1500	1750	1750	2050	2050	2350	2350	2750	2750	3050	3050	3350	3700
L(mm)	400	400	400	400	400	400	400	400	400	400	400	400	400	400	400	400	400	400	400
Net(kg)	47	55	60	69	70	80	89	98	120	129	147	158	170	208	251	266	301	330	348

Amount of filter

Model	LZK2	LZK4	LZK6	LZK8	LZK10	LZK12	LZK15	LZK18	LZK20	LZK25	LZK30	LZK35	LZK40	LZK50	LZK60	LZK70	LZK80	LZK90	LZK100
Air flow (m³/h)	2000	4000	6000	8000	10000	12000	15000	18000	20000	25000	30000	35000	40000	50000	60000	70000	80000	90000	100000
595x595	1	1	1	2	4	4	4	4	6	9	9	9	12	16	20	20	20	25	25
595x290		1	2	2			2	4	3		3	6	4			5	9	5	10



Middle section

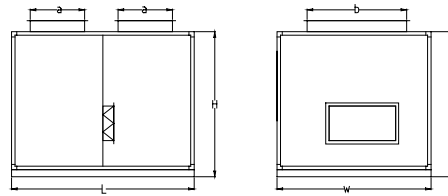
Model	LZK2	LZK4	LZK6	LZK8	LZK10	LZK12	LZK15	LZK18	LZK20	LZK25	LZK30	LZK35	LZK40	LZK50	LZK60	LZK70	LZK80	LZK90	LZK100
Air flow (m³/h)	2000	4000	6000	8000	10000	12000	15000	18000	20000	25000	30000	35000	40000	50000	60000	70000	80000	90000	100000
W(mm)	780	1150	1150	1400	1400	1500	1750	1750	2050	2050	2350	2350	2750	2750	3350	3350	3700	3700	3700
H(mm)	780	860	1150	1150	1400	1500	1500	1750	1750	2050	2050	2350	2350	2750	2750	3050	3050	3350	3700
L(mm)	600	600	600	600	600	600	600	600	600	600	600	600	600	600	600	600	600	600	600
Net(kg)	46	67	74	81	90	98	109	119	140	150	169	185	202	245	292	303	348	375	398

Modular Air Handling Unit

Distributary section

Model	LZK2	LZK4	LZK6	LZK8	LZK10	LZK12	LZK15	LZK18	LZK20	LZK25	LZK30	LZK35	LZK40	LZK50	LZK60	LZK70	LZK80	LZK90	LZK100
Air flow (m³/h)	2000	4000	6000	8000	10000	12000	15000	18000	20000	25000	30000	35000	40000	50000	60000	70000	80000	90000	100000
W(mm)	780	1150	1150	1400	1400	1500	1750	1750	2050	2050	2350	2350	2750	2750	3350	3350	3700	3700	3700
H(mm)	780	860	1150	1150	1400	1500	1500	1750	1750	2050	2050	2350	2350	2750	2750	3050	3050	3350	3700
L(mm)	1000	1000	1000	1000	1200	1200	1200	1200	1600	1600	1600	1600	2000	2000	2000	2000	2000	2000	2000
a(mm)	300	300	400	400	450	450	500	500	600	600	650	650	700	800	800	850	850	900	900
b(mm)	400	500	600	800	1000	1100	1200	1300	1400	1550	1750	1950	2100	2200	2400	2600	2800	3000	3200
Net(kg)	62	93	98	110	138	146	162	169	242	265	288	312	411	465	516	540	623	680	712

• Tuyere size can be made according to the request of customer.



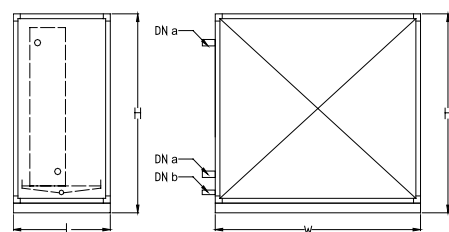
distributary section

Surface cooling section

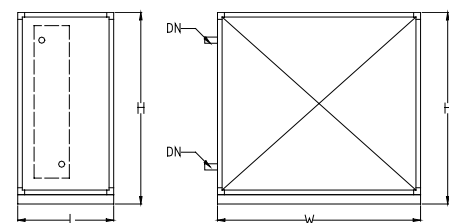
Model	LZK2	LZK4	LZK6	LZK8	LZK10	LZK12	LZK15	LZK18	LZK20	LZK25	LZK30	LZK35	LZK40	LZK50	LZK60	LZK70	LZK80	LZK90	LZK100
Air flow (m³/h)	2000	4000	6000	8000	10000	12000	15000	18000	20000	25000	30000	35000	40000	50000	60000	70000	80000	90000	100000
W(mm)	780	1150	1150	1400	1400	1500	1750	1750	2050	2050	2350	2350	2750	2750	3350	3350	3700	3700	3700
H(mm)	780	860	1150	1150	1400	1500	1500	1750	1750	2050	2050	2350	2350	2750	2750	3050	3050	3350	3700
L(mm)	600	600	600	600	600	600	600	600	600	600	600	600	600	600	600	600	600	600	600
a(inch)	1.25	1.25	1.5	1.5	2	2	2	3	3	3	3	4	4	3x2	3x2	4x2	4x2	4x2	4x2
b(inch)	1.25	1.25	1.5	1.5	2	2	2	3	3	3	3	4	4	3x2	3x2	4x2	4x2	4x2	4x2
c(inch)	1	1	1	1	1	1	1	1	1	1	1	1	1	1.5	1.5	1.5	1.5	1.5	1.5
Net(kg)	70	82	93	112	148	160	182	213	255	283	320	365	402	476	591	643	705	778	839

Heating section

Model	LZK2	LZK4	LZK6	LZK8	LZK10	LZK12	LZK15	LZK18	LZK20	LZK25	LZK30	LZK35	LZK40	LZK50	LZK60	LZK70	LZK80	LZK90	LZK100
Air flow (m³/h)	2000	4000	6000	8000	10000	12000	15000	18000	20000	25000	30000	35000	40000	50000	60000	70000	80000	90000	100000
W(mm)	780	1150	1150	1400	1400	1500	1750	1750	2050	2050	2350	2350	2750	2750	3350	3350	3700	3700	3700
H(mm)	780	860	1150	1150	1400	1500	1500	1750	1750	2050	2050	2350	2350	2750	2750	3050	3050	3350	3700
L(mm)	300	300	300	300	300	300	300	300	300	300	300	300	300	300	300	300	300	300	300
DN(inch)	1.25	1.25	1.25	1.25	1.25	1.5	1.5	1.5	1.5	2	2	2	2	1.5x2	1.5x2	1.5x2	2x2	2x2	2x2
Net(kg)	45	67	80	89	101	115	130	160	194	218	256	288	301	368	452	501	565	618	662



Surface cooling section



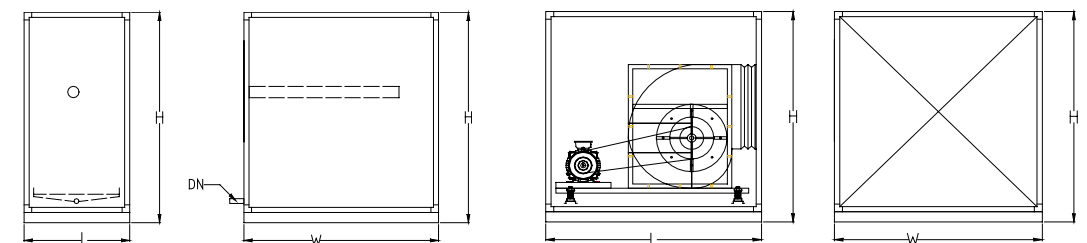
Heating section

Humidifier section

Model	LZK2	LZK4	LZK6	LZK8	LZK10	LZK12	LZK15	LZK18	LZK20	LZK25	LZK30	LZK35	LZK40	LZK50	LZK60	LZK70	LZK80	LZK90	LZK100
Air flow (m³/h)	2000	4000	6000	8000	10000	12000	15000	18000	20000	25000	30000	35000	40000	50000	60000	70000	80000	90000	100000
W(mm)	780	1150	1150	1400	1400	1500	1750	1750	2050	2050	2350	2350	2750	2750	3350	3350	3700	3700	3700
H(mm)	780	860	1150	1150	1400	1500	1500	1750	1750	2050	2050	2350	2350	2750	2750	3050	3050	3350	3700
L(mm)	800	800	800	800	800	800	1000	1000	1000	1000	1000	1000	1000	1200	1200	1200	1200	1200	1200
DN(inch)	1	1	1	1	1	1	1	1	1	1	1	1	1	1.5	1.5	1.5	1.5	1.5	1.5
Net(kg)	76	99	103	114	120	138	165	172	211	233	252	269	289	365	419	460	527	568	595

Fan section

Model	LZK2	LZK4	LZK6	LZK8	LZK10	LZK12	LZK15	LZK18	LZK20	LZK25	LZK30	LZK35	LZK40	LZK50	LZK60	LZK70	LZK80	LZK90	LZK100
Air flow (m³/h)	2000	4000	6000	8000	10000	12000	15000	18000	20000	25000	30000	35000	40000	50000	60000	70000	80000	90000	100000
W(mm)	780	1150	1150	1400	1400	1500	1750	1750	2050	2050	2350	2350	2750	2750	3350	3350	3700	3700	3700
H(mm)	780	860	1150	1150	1400	1500	1500	1750	1750	2050	2050	2350	2350	2750	2750	3050	3050	3350	3700
L(mm)	800	900	1000	1100	1150	1250	1350	1400	1500	1600	1750	1750	1850	2050	2250	2250	2400	2600	2850
Net(kg)	109	143	172	202	214	254	308	368	415	497	617	719	867	1024	1279	1392	1703	1797	2015



Humidifier section

Fan section

Rotary heat recovery exchanger

Model	LZK2	LZK4	LZK6	LZK8	LZK10	LZK12	LZK15	LZK18	LZK20	LZK25	LZK30	LZK35	LZK40	LZK50	LZK60	LZK70	LZK80	LZK90	LZK100
Air flow (m³/h)	2000	4000	6000	8000	10000	12000	15000	18000	20000	25000	30000	35000	40000	50000	60000	70000	80000	90000	100000
W(mm)	780	1150	1150	1400	1400	1500	1750	1750	2050	2050	2350	2350	2750	2750	3350	3350	3700	3700	3700
H(mm)	780	860	1150	1150	1400	1500	1500	1750	1750	2050	2050	2350	2350	2750	2750	3050	3050	3350	3700
L(mm)	500	500	500	500	600	600	600	600	600	600	700	700	700	700	700	700	700	700	700
Net(kg)	210	292	348	392	495	538	579	673	789	884	1289	1405	1579	1804	1977	2367	2470	2672	2843

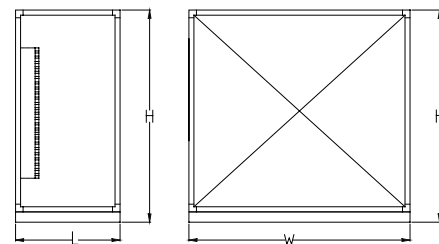
Modular Air Handling Unit

Equality air supply section

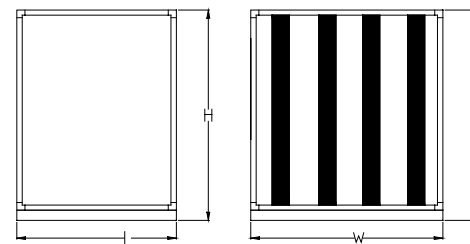
Model	LZK2	LZK4	LZK6	LZK8	LZK10	LZK12	LZK15	LZK18	LZK20	LZK25	LZK30	LZK35	LZK40	LZK50	LZK60	LZK70	LZK80	LZK90	LZK100
Air flow (m³/h)	2000	4000	6000	8000	10000	12000	15000	18000	20000	25000	30000	35000	40000	50000	60000	70000	80000	90000	100000
W(mm)	780	1150	1150	1400	1400	1500	1750	1750	2050	2050	2350	2350	2750	2750	3350	3350	3700	3700	3700
H(mm)	780	860	1150	1150	1400	1500	1500	1750	1750	2050	2050	2350	2350	2750	2750	3050	3050	3350	3700
L(mm)	500	500	500	500	600	600	600	600	800	800	800	800	800	1000	1000	1000	1000	1000	1000
Net(kg)	42	61	67	80	91	98	112	121	166	176	189	209	237	301	357	397	427	465	498

Noise reduction section

Model	LZK2	LZK4	LZK6	LZK8	LZK10	LZK12	LZK15	LZK18	LZK20	LZK25	LZK30	LZK35	LZK40	LZK50	LZK60	LZK70	LZK80	LZK90	LZK100
Air flow (m³/h)	2000	4000	6000	8000	10000	12000	15000	18000	20000	25000	30000	35000	40000	50000	60000	70000	80000	90000	100000
W(mm)	780	1150	1150	1400	1400	1500	1750	1750	2050	2050	2350	2350	2750	2750	3350	3350	3700	3700	3700
H(mm)	780	860	1150	1150	1400	1500	1500	1750	1750	2050	2050	2350	2350	2750	2750	3050	3050	3350	3700
L(mm)	950	950	950	950	950	950	950	950	950	950	950	950	950	950	950	950	950	950	950
	1250	1250	1250	1250	1250	1250	1250	1250	1250	1250	1250	1250	1250	1250	1250	1250	1250	1250	1250
Net(kg)	132	180	236	255	284	309	348	392	489	565	648	701	798	953	1086	1167	1387	1464	1592



Equality air supply section



Noise reduction section

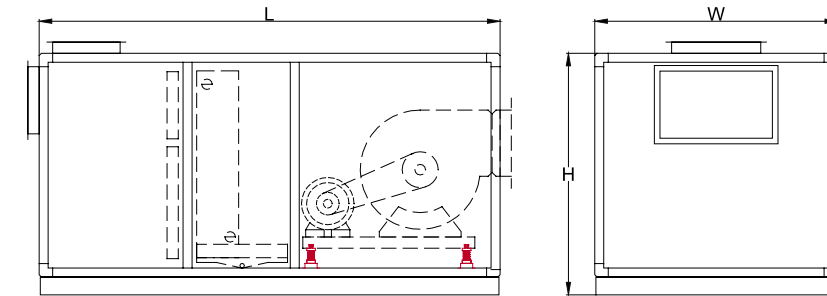
Air supply section

Model	LZK2	LZK4	LZK6	LZK8	LZK10	LZK12	LZK15	LZK18	LZK20	LZK25	LZK30	LZK35	LZK40	LZK50	LZK60	LZK70	LZK80	LZK90	LZK100
Air flow (m³/h)	2000	4000	6000	8000	10000	12000	15000	18000	20000	25000	30000	35000	40000	50000	60000	70000	80000	90000	100000
W(mm)	780	1150	1150	1400	1400	1500	1750	1750	2050	2050	2350	2350	2750	2750	3350	3350	3700	3700	3700
H(mm)	780	860	1150	1150	1400	1500	1500	1750	1750	2050	2050	2350	2350	2750	2750	3050	3050	3350	3700
L(mm)	600	600	600	600	600	600	600	600	800	800	800	800	800	1000	1000	1000	1000	1000	1000
a(mm)	300	300	400	400	450	450	500	500	600	600	650	650	700	800	800	850	850	900	900
b(mm)	400	500	600	800	1000	1100	1200	1300	1400	1550	1750	1950	2100	2200	2400	2600	2800	3000	3200
Net(kg)	46	68	75	84	93	99	113	123	167	178	197	211	236	312	361	403	432	460	493

Assembly type air conditioner normal model(Horizontal type)

Assembly type air handling unit normal model One

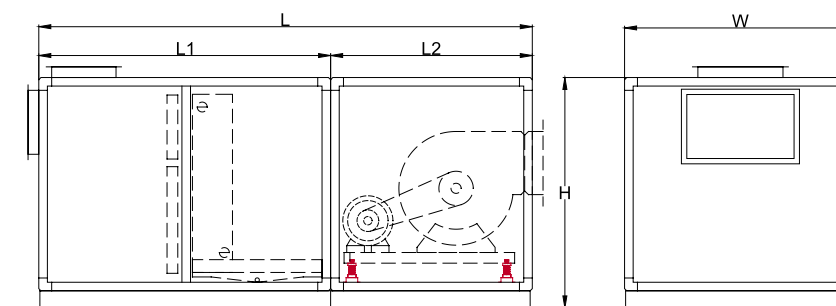
Type I (mixing section + primary filtering section + surface cooling section + fan section)



Model	Air flow(m³/h)	W(mm)	H(mm)	L(mm)	Net(kg)
LZK2	2000	780	780	2000	153
LZK4	4000	1150	860	2100	265
LZK6	6000	1150	1150	2200	302
LZK8	8000	1400	1150	2300	370
LZK10	10000	1400	1400	2450	428
LZK12	12000	1500	1500	2550	465
LZK15	15000	1750	1500	2650	538
LZK18	18000	1750	1750	2700	624
LZK20	20000	2050	1750	2900	713
LZK25	25000	2050	2050	3000	834

Assembly type air handling unit normal model One

Type II (mixing section + primary filtering section + surface cooling section + fan section)

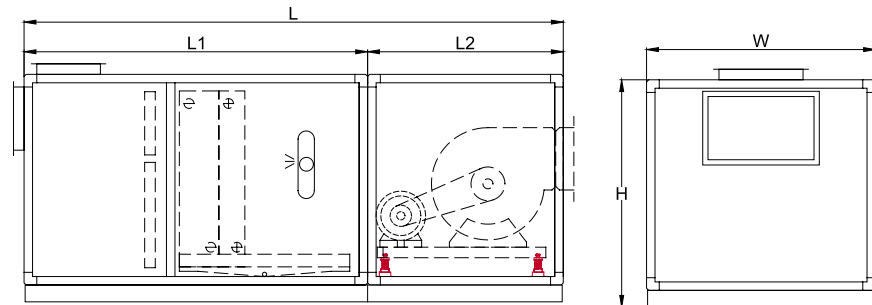


Model	Air flow(m³/h)	W(mm)	H(mm)	L(mm)	L1(mm)	L2(mm)	Net(kg)
LZK30	30000	2350	2050	3250	1500	1750	1020
LZK35	35000	2350	2350	3250	1500	1750	1176
LZK40	40000	2750	2350	3350	1500	1850	1335
LZK50	50000	2750	2750	3750	1700	2050	1628
LZK60	60000	3350	2750	3950	1700	2250	1935
LZK70	70000	3350	3050	3950	1700	2250	2146
LZK80	80000	3700	3050	4100	1700	2400	2509
LZK90	90000	3700	3350	4300	1700	2600	2687
LZK100	100000	3700	3700	4550	1700	2850	2938

Modular Air Handling Unit

Assembly type air handling unit normal model Two

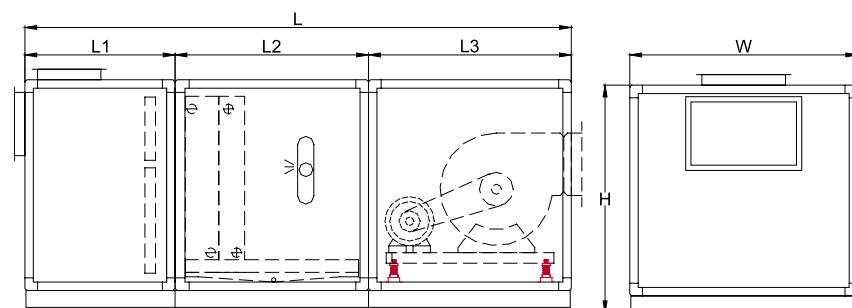
Type I (mixing section + primary filtering section + surface cooling section + heating section + humidifier section + fan section)



Model	Air flow(m³/h)	W(mm)	H(mm)	L(mm)	L1(mm)	L2(mm)	Net(kg)
LZK2	2000	780	780	2600	1800	800	213
LZK4	4000	1150	860	2700	1800	900	337
LZK6	6000	1150	1150	2800	1800	1000	375
LZK8	8000	1400	1150	2900	1800	1100	446
LZK10	10000	1400	1400	3050	1900	1150	518
LZK12	12000	1500	1500	3150	1900	1250	550
LZK15	15000	1750	1500	3250	1900	1350	642
LZK18	18000	1750	1750	3300	1900	1400	743
LZK20	20000	2050	1750	3600	2100	1500	883
LZK25	25000	2050	2050	3700	2100	1600	1002
LZK30	30000	2350	2050	3850	2100	1750	1146
LZK35	35000	2350	2350	3850	2100	1750	1329
LZK40	40000	2750	2350	3950	2100	1850	1512

Assembly type air handling unit normal model Two

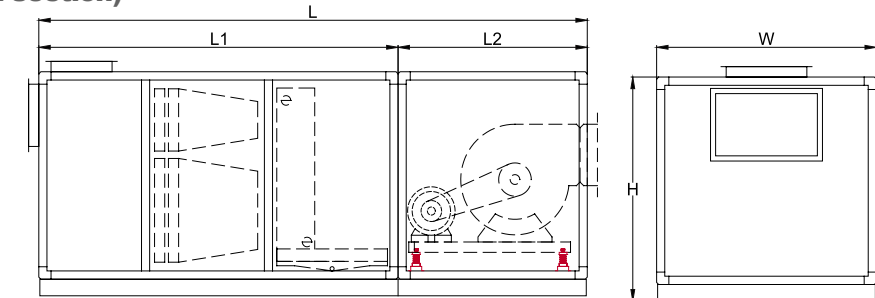
Type II (mixing section + primary filtering section + surface cooling section + heating section + humidifier section + fan section)



Model	Air flow(m³/h)	W(mm)	H(mm)	L(mm)	L1(mm)	L2(mm)	L3(mm)	Net(kg)
LZK50	50000	2750	2750	4650	1400	1200	2050	1803
LZK60	60000	3350	2750	4850	1400	1200	2250	2205
LZK70	70000	3350	3050	4850	1400	1200	2250	2377
LZK80	80000	3700	3050	5000	1400	1200	2400	2780
LZK90	90000	3700	3350	5200	1400	1200	2600	3005
LZK100	100000	3700	3700	5450	1400	1200	2850	3379

Assembly type air handling unit normal model Three

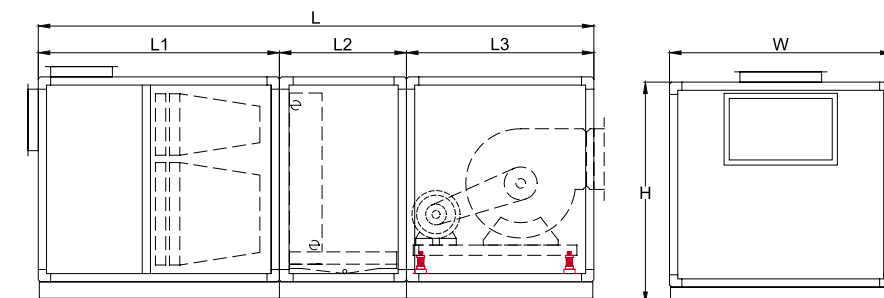
Type I (mixing section + primary filtering section + middle filtering section + surface cooling section + fan section)



Model	Air flow(m³/h)	W(mm)	H(mm)	L(mm)	L1(mm)	L2(mm)	Net(kg)
LZK2	2000	780	780	2600	1800	800	212
LZK4	4000	1150	860	2700	1800	900	315
LZK6	6000	1150	1150	2800	1800	1000	361
LZK8	8000	1400	1150	2900	1800	1100	427
LZK10	10000	1400	1400	3050	1900	1150	482
LZK12	12000	1500	1500	3150	1900	1250	515
LZK15	15000	1750	1500	3250	1900	1350	613
LZK18	18000	1750	1750	3300	1900	1400	704
LZK20	20000	2050	1750	3600	2100	1500	812
LZK25	25000	2050	2050	3700	2100	1600	950
LZK30	30000	2350	2050	3850	2100	1750	1123
LZK35	35000	2350	2350	3850	2100	1750	1264
LZK40	40000	2750	2350	3950	2100	1850	1452

Assembly type air handling unit normal model Three

Type II (mixing section + primary filtering section + middle filtering section + surface cooling section + fan section)

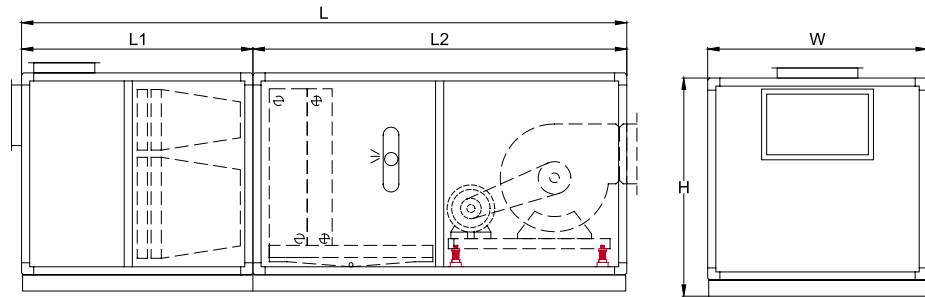


Model	Air flow(m³/h)	W(mm)	H(mm)	L(mm)	L1(mm)	L2(mm)	L3(mm)	Net(kg)
LZK50	50000	2750	2750	4650	1800	800	2050	1789
LZK60	60000	3350	2750	4850	1800	800	2250	2136
LZK70	70000	3350	3050	4850	1800	800	2250	2373
LZK80	80000	3700	3050	5000	1800	800	2400	2765
LZK90	90000	3700	3350	5200	1800	800	2600	2901
LZK100	100000	3700	3700	5450	1800	800	2850	3174

Modular Air Handling Unit

Assembly type air handling unit normal model Four

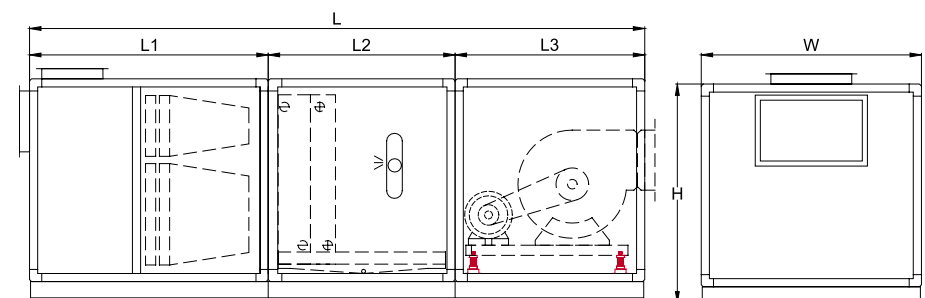
Type I (mixing section + primary filtering section + middle filtering section + surface cooling section + heating section + humidifier section + fan section)



Model	Air flow(m³/h)	W(mm)	H(mm)	L(mm)	L1(mm)	L2(mm)	Net(kg)
LZK2	2000	780	780	3200	1200	2000	241
LZK4	4000	1150	860	3300	1200	2100	373
LZK6	6000	1150	1150	3400	1200	2200	425
LZK8	8000	1400	1150	3500	1200	2300	512
LZK10	10000	1400	1400	3750	1300	2450	574
LZK12	12000	1500	1500	3850	1300	2550	601
LZK15	15000	1750	1500	3950	1300	2650	706
LZK18	18000	1750	1750	3900	1300	2600	812
LZK20	20000	2050	1750	4200	1500	2700	953
LZK25	25000	2050	2050	4300	1500	2800	1075

Assembly type air handling unit normal model Four

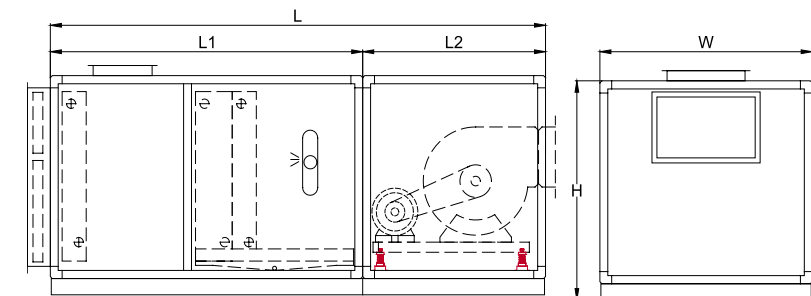
Type II (mixing section + primary filtering section + middle filtering section + surface cooling section + heating section + humidifier section + fan section)



Model	Air flow(m³/h)	W(mm)	H(mm)	L(mm)	L1(mm)	L2(mm)	L3(mm)	Net(kg)
LZK30	30000	2350	2050	4550	1600	1200	1750	1253
LZK35	35000	2350	2350	4550	1600	1200	1750	1417
LZK40	40000	2750	2350	4650	1600	1200	1850	1573
LZK50	50000	2750	2750	5250	1800	1400	2050	1903
LZK60	60000	3350	2750	5450	1800	1400	2250	2339
LZK70	70000	3350	3050	5450	1800	1400	2250	2539
LZK80	80000	3700	3050	5600	1800	1400	2400	2946
LZK90	90000	3700	3350	5800	1800	1400	2600	3218
LZK100	100000	3700	3700	6050	1800	1400	2850	3512

Assembly type air handling unit normal model Five

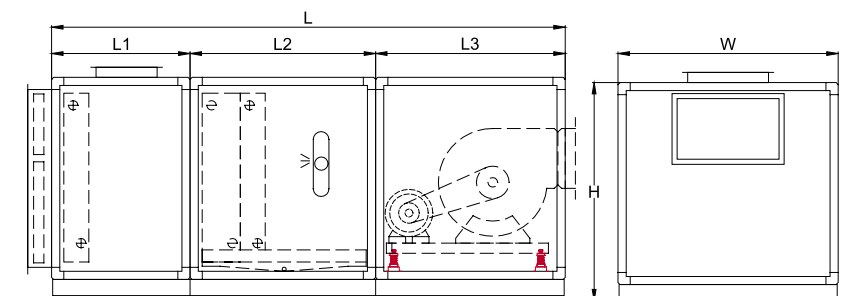
Type I (primary filtering section + pre-heating section + mixing section + surface cooling section + heating section + humidifier section + fan section)



Model	Air flow(m³/h)	W(mm)	H(mm)	L(mm)	L1(mm)	L2(mm)	Net(kg)
LZK2	2000	780	780	2600	1800	800	241
LZK4	4000	1150	860	2700	1800	900	338
LZK6	6000	1150	1150	2800	1800	1000	429
LZK8	8000	1400	1150	2900	1800	1100	493
LZK10	10000	1400	1400	3050	1900	1150	571
LZK12	12000	1500	1500	3150	1900	1250	601
LZK15	15000	1750	1500	3250	1900	1350	708
LZK18	18000	1750	1750	3300	1900	1400	807
LZK20	20000	2050	1750	3400	1900	1500	937
LZK25	25000	2050	2050	3500	1900	1600	1065
LZK30	30000	2350	2050	3650	1900	1750	1237
LZK35	35000	2350	2350	3650	1900	1750	1438
LZK40	40000	2350	2350	3750	1900	1850	1609

Assembly type air handling unit normal model Five

Type II (primary filtering section + pre-heating section + mixing section + surface cooling section + heating section + humidifier section + fan section)

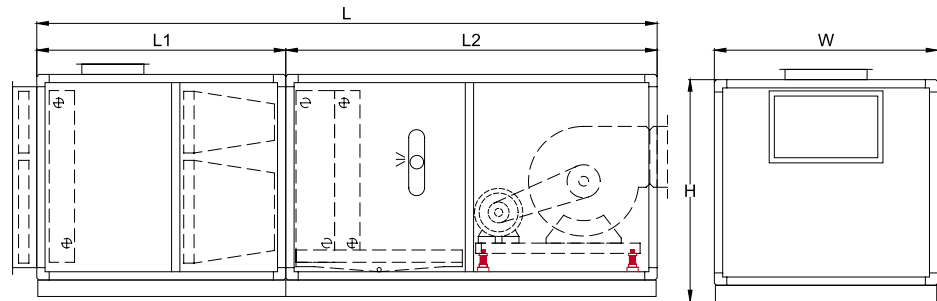


Model	Air flow(m³/h)	W(mm)	H(mm)	L(mm)	L1(mm)	L2(mm)	L3(mm)	Net(kg)
LZK50	50000	2750	2750	4650	1200	1400	2050	1956
LZK60	60000	3350	2750	4850	1200	1400	2250	2425
LZK70	70000	3350	3050	4850	1200	1400	2250	2608
LZK80	80000	3700	3050	5000	1200	1400	2400	3038
LZK90	90000	3700	3350	5200	1200	1400	2600	3287
LZK100	100000	3700	3700	5450	1200	1400	2850	3625

Modular Air Handling Unit

Assembly type air handling unit normal model Six

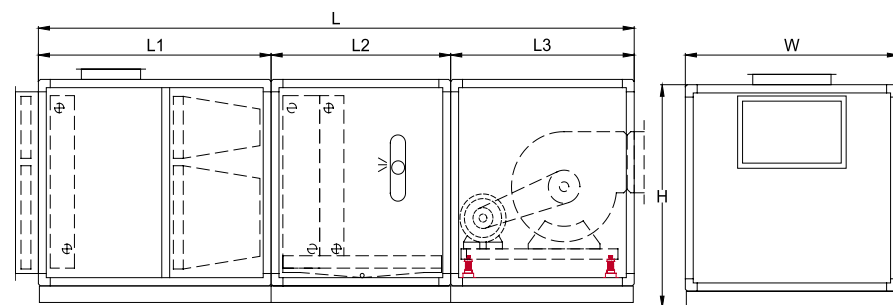
Type I (primary filtering section + pre-heating section + mixing section + middle filtering section + surface cooling section + heating section + humidifier section + fan section)



Model	Air flow(m³/h)	W(mm)	H(mm)	L(mm)	L1(mm)	L2(mm)	Net(kg)
LZK2	2000	780	780	3300	1300	2000	253
LZK4	4000	1150	860	3400	1300	2100	390
LZK6	6000	1150	1150	3500	1300	2200	448
LZK8	8000	1400	1150	3600	1300	2300	527
LZK10	10000	1400	1400	3850	1400	2450	602
LZK12	12000	1500	1500	3950	1400	2550	633
LZK15	15000	1750	1500	4050	1400	2650	719
LZK18	18000	1750	1750	4000	1400	2600	865
LZK20	20000	2050	1750	4300	1600	2700	1002
LZK25	25000	2050	2050	4400	1600	2800	1127

Assembly type air handling unit normal model Six

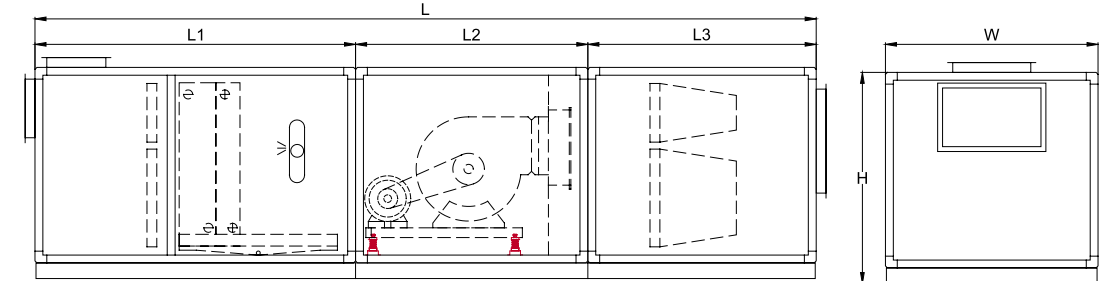
Type II (primary filtering section + pre-heating section + mixing section + middle filtering section + surface cooling section + heating section + humidifier section + fan section)



Model	Air flow(m³/h)	W(mm)	H(mm)	L(mm)	L1(mm)	L2(mm)	L3(mm)	Net(kg)
LZK30	30000	2350	2050	4550	1600	1200	1750	1306
LZK35	35000	2350	2350	4550	1600	1200	1750	1475
LZK40	40000	2750	2350	4650	1600	1200	1850	1683
LZK50	50000	2750	2750	5250	1800	1400	2050	2008
LZK60	60000	3350	2750	5450	1800	1400	2250	2437
LZK70	70000	3350	3050	5450	1800	1400	2250	2672
LZK80	80000	3700	3050	5600	1800	1400	2400	3153
LZK90	90000	3700	3350	5800	1800	1400	2600	3365
LZK100	100000	3700	3700	6050	1800	1400	2850	3768

Assembly type air handling unit normal model Seven

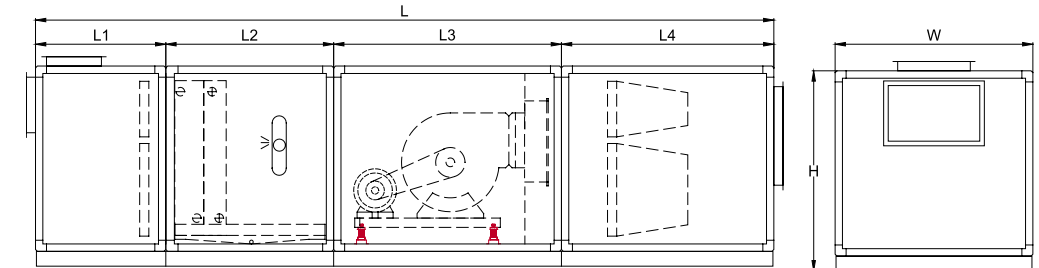
Type I (mixing section + primary filtering section + surface cooling section + heating section + humidifier section + fan section + equality air supply section + middle filtering section + air supply section)



Model	Air flow(m³/h)	W(mm)	H(mm)	L(mm)	L1(mm)	L2(mm)	L3(mm)	Net(kg)
LZK2	2000	780	780	4500	1800	1200	1500	260
LZK4	4000	1150	860	4600	1800	1300	1500	401
LZK6	6000	1150	1150	4700	1800	1400	1500	453
LZK8	8000	1400	1150	4900	1800	1500	1600	524
LZK10	10000	1400	1400	5050	1900	1550	1600	619
LZK12	12000	1500	1500	5150	1900	1650	1600	662
LZK15	15000	1750	1500	5250	1900	1750	1600	768
LZK18	18000	1750	1750	5300	1900	1800	1600	873
LZK20	20000	2050	1750	5600	1900	1900	1800	976
LZK25	25000	2050	2050	5900	2100	2000	1800	1138
LZK30	30000	2350	2050	6050	2100	2150	1800	1356
LZK35	35000	2350	2350	6050	2100	2150	1800	1563
LZK40	40000	2750	2350	6150	2100	2250	1800	1735

Assembly type air handling unit normal model Seven

Type II (mixing section + primary filtering section + surface cooling section + heating section + humidifier section + fan section + equality air supply section + middle filtering section + air supply section)

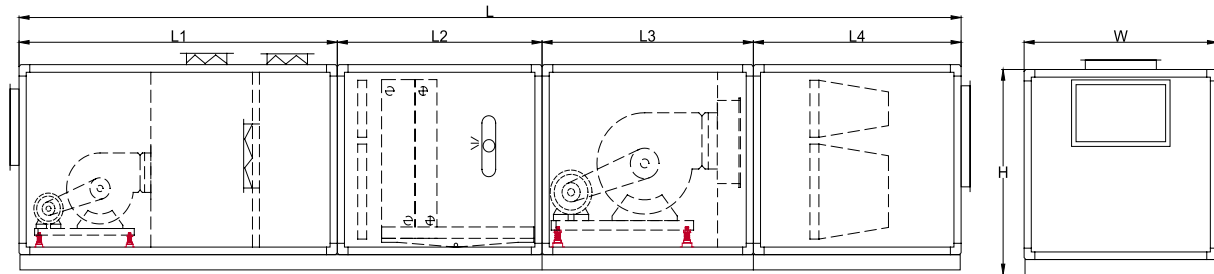


Model	Air flow(m³/h)	W(mm)	H(mm)	L(mm)	L1(mm)	L2(mm)	L3(mm)	L4(mm)	Net(kg)
LZK50	50000	2750	2750	6950	1200	1400	2350	2000	1962
LZK60	60000	3350	2750	7150	1200	1400	2550	2000	2562
LZK70	70000	3350	3050	7150	1200	1400	2550	2000	2793
LZK80	80000	3700	3050	7300	1200	1400	2700	2000	3260
LZK90	90000	3700	3350	7500	1200	1400	2900	2000	3532
LZK100	100000	3700	3700	7750	1200	1400	3150	2000	3876

Modular Air Handling Unit

Assembly type air handling unit normal model Eight

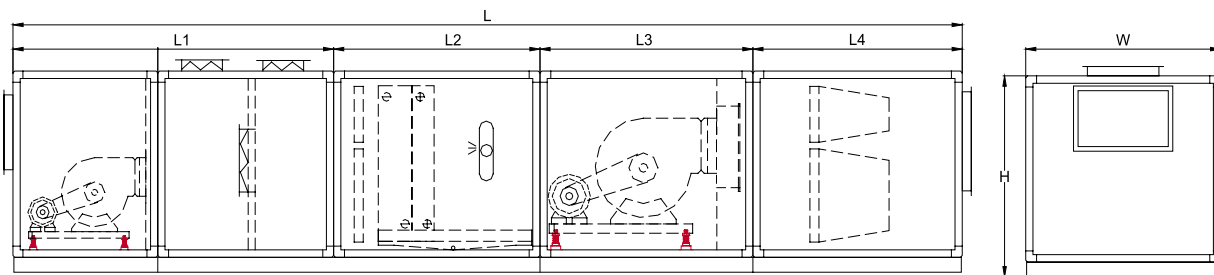
Type I (air return section + distributary section + primary filtering section + surface cooling section + heating section + humidifier section + fan section + equality air supply section + middle filtering section + air supply section)



Model	Air flow(m³/h)	W(mm)	H(mm)	L(mm)	L1(mm)	L2(mm)	L3(mm)	L4(mm)	Net(kg)
LZK2	2000	780	780	5300	1200	1400	1200	1500	343
LZK4	4000	1150	860	5500	1300	1400	1300	1500	506
LZK6	6000	1150	1150	5700	1400	1400	1400	1500	591
LZK8	8000	1400	1150	6000	1500	1400	1500	1600	690
LZK10	10000	1400	1400	6250	1600	1500	1550	1600	796
LZK12	12000	1500	1500	6350	1600	1500	1650	1600	848
LZK15	15000	1750	1500	6550	1700	1500	1750	1600	976
LZK18	18000	1750	1750	6650	1750	1500	1800	1600	1156
LZK20	20000	2050	1750	7000	1800	1500	1900	1800	1302
LZK25	25000	2050	2050	7150	1850	1500	2000	1800	1486
LZK30	30000	2350	2050	7350	1900	1500	2150	1800	1759
LZK35	35000	2350	2350	7600	2150	1500	2150	1800	2003
LZK40	40000	2750	2350	7850	2300	1500	2250	1800	2283

Assembly type air handling unit normal model Eight

Type II (air return section + distributary section + primary filtering section + surface cooling section + heating section + humidifier section + fan section + equality air supply section + middle filtering section + air supply section)



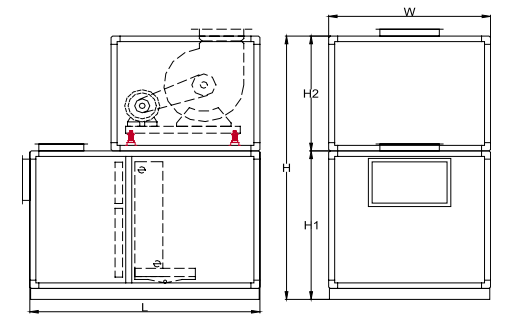
Model	Air flow(m³/h)	W(mm)	H(mm)	L(mm)	L1(mm)	L2(mm)	L3(mm)	L4(mm)	Net(kg)
LZK50	50000	2750	2750	8750	2700	1700	2350	2000	2763
LZK60	60000	3350	2750	9050	2800	1700	2550	2000	3369
LZK70	70000	3350	3050	9050	2800	1700	2550	2000	3675
LZK80	80000	3700	3050	9400	3000	1700	2700	2000	4316
LZK90	90000	3700	3350	9700	3100	1700	2900	2000	4638
LZK100	100000	3700	3700	10150	3300	1700	3150	2000	5193

Assembly type air conditioner normal model(Vertical type)

Assembly type air handling unit normal model One

Type I (mixing section + primary filtering section + surface cooling section + fan section)

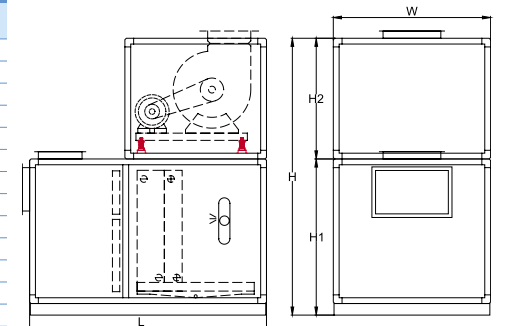
Model	Air flow(m³/h)	W(mm)	H(mm)	H1(mm)	H2(mm)	L(mm)	Net(kg)
LZK2	2000	780	1330	780	550	1300	182
LZK4	4000	1150	1470	860	610	1300	293
LZK6	6000	1150	1850	1150	700	1300	319
LZK8	8000	1400	1900	1150	750	1300	393
LZK10	10000	1400	2210	1400	810	1400	467
LZK12	12000	1500	2380	1500	880	1400	493
LZK15	15000	1750	2450	1500	950	1400	576
LZK18	18000	1750	2770	1750	1020	1400	681
LZK20	20000	2050	2770	1750	1020	1600	802
LZK25	25000	2050	3170	2050	1120	1600	907
LZK30	30000	2350	3280	2050	1230	1600	1048
LZK35	35000	2350	3580	2350	1230	1600	1216
LZK40	40000	2750	3700	2350	1350	1600	1382



Assembly type air handling unit normal model Two

Type I (mixing section + primary filtering section + surface cooling section + heating section + humidifier section + fan section)

Model	Air flow(m³/h)	W(mm)	H(mm)	H1(mm)	H2(mm)	L(mm)	Net(kg)
LZK2	2000	780	1330	780	550	1900	226
LZK4	4000	1150	1470	860	610	1900	352
LZK6	6000	1150	1850	1150	700	1900	392
LZK8	8000	1400	1900	1150	750	1900	468
LZK10	10000	1400	2210	1400	810	2000	542
LZK12	12000	1500	2380	1500	880	2000	576
LZK15	15000	1750	2450	1500	950	2000	667
LZK18	18000	1750	2770	1750	1020	2000	786
LZK20	20000	2050	2770	1750	1020	2200	903
LZK25	25000	2050	3170	2050	1120	2200	1007
LZK30	30000	2350	3280	2050	1230	2200	1183
LZK35	35000	2350	3580	2350	1230	2200	1376
LZK40	40000	2750	3700	2350	1350	2200	1508



Assembly type air handling unit normal model Three

Type I (mixing section + primary filtering section + middle filtering section + surface cooling section + fan section)

Model	Air flow(m³/h)	W(mm)	H(mm)	H1(mm)	H2(mm)	L(mm)	Net(kg)
LZK2	2000	780	1330	780	550	1900	258
LZK4	4000	1150	1470	860	610	1900	412
LZK6	6000	1150	1850	1150	700	1900	468
LZK8	8000	1400	1900	1150	750	1900	546
LZK10	10000	1400	2210	1400	810	2000	621
LZK12	12000	1500	2380	1500	880	2000	663
LZK15	15000	1750	2450	1500	950	2000	783
LZK18	18000	1750	2770	1750	1020	2000	893
LZK20	20000	2050	2770	1750	1020	2200	993
LZK25	25000	2050	3170	2050	1120	2200	1186
LZK30	30000	2350	3280	2050	1230	2200	1362
LZK35	35000	2350	3580	2350	1230	2200	1547
LZK40	40000	2750	3700	2350	1350	2200	1793

